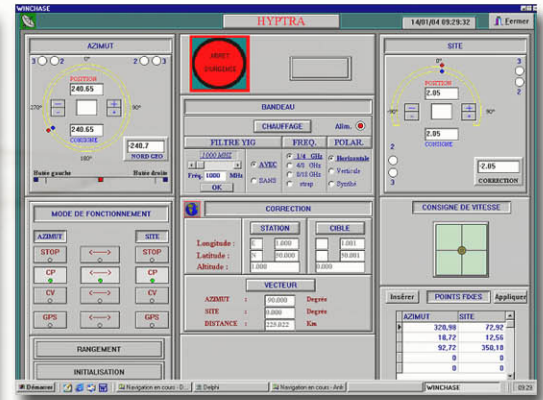
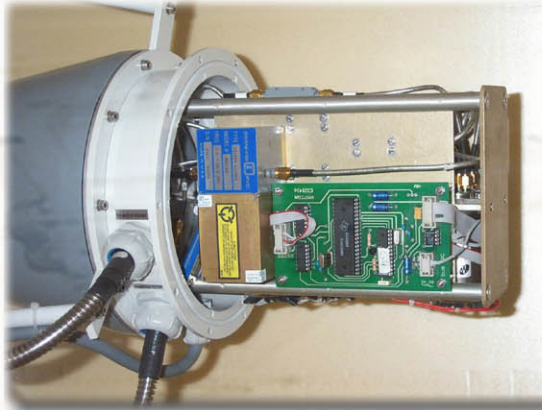


# COMMINT ANTENNA SYSTEM



## DESCRIPTION

This station is designed for signals reception from 1 to 18 GHz in three sub-bands. The feed is can be equipped in option with a YIG filter for short loop tests. It is operated in Remote (RS 232C) or Local mode.

In local mode, through 2 switches: up/down and right/left.  
In remote mode through a friendly Man Machine Interface for PC.

Main operating modes are:

- manual mode
- Slew mode
- STOP
- Step-track in option
- Frequency band selection
- Station Monitoring (Alarms and status)

The station is mainly composed of the following parts:

- Two axis antenna with dish and feed
- Control & servo power rack 3U
- Antenna Control software for PC



## SPECIFICATIONS

- Frequency bandwidth.....1-18 GHz
- Sub-bands.....1-4GHz; 4-8 GHz; 8-16 GHz
- Polarization.....Linear: Vertical and Horizontal by switching
- Diameter dish.....0.9 m

### PEDESTAL

- Type.....Elevation over Azimuth
- Elevation range.....-90° to +90°
- Azimuth range.....+/- 190° or continuous  
in option
- Rotation speed max..... $\geq 10^\circ/s$  on both axes
- Acceleration max..... $\geq 30^\circ/s^2$  on both axes
- Pointing accuracy..... $\pm 0.08^\circ$  (in manual mode)
- Optical encoders.....12 bits  
(13, 14 bits in option)

### ENVIRONMENTAL

- Storage temperature.....-35° to +70°C
- Operating temperature.....-30 to +50°C (outdoor)
- Rain.....Up to 50 mm/hour
- Relative humidity.....0 to 100% (outdoor)
- Operating wind load.....120 km/h (fixed)

### MECHANICAL

- Height.....180 cm
- Total weight.....< 110 Kg
- Color (ant. & pedestal).....RAL9003 (white) or other upon request.